



BEDROOMS: 3

BATHROOMS: 2 + 1/2

DEVELOPED SPACE: 2,335 S.F.

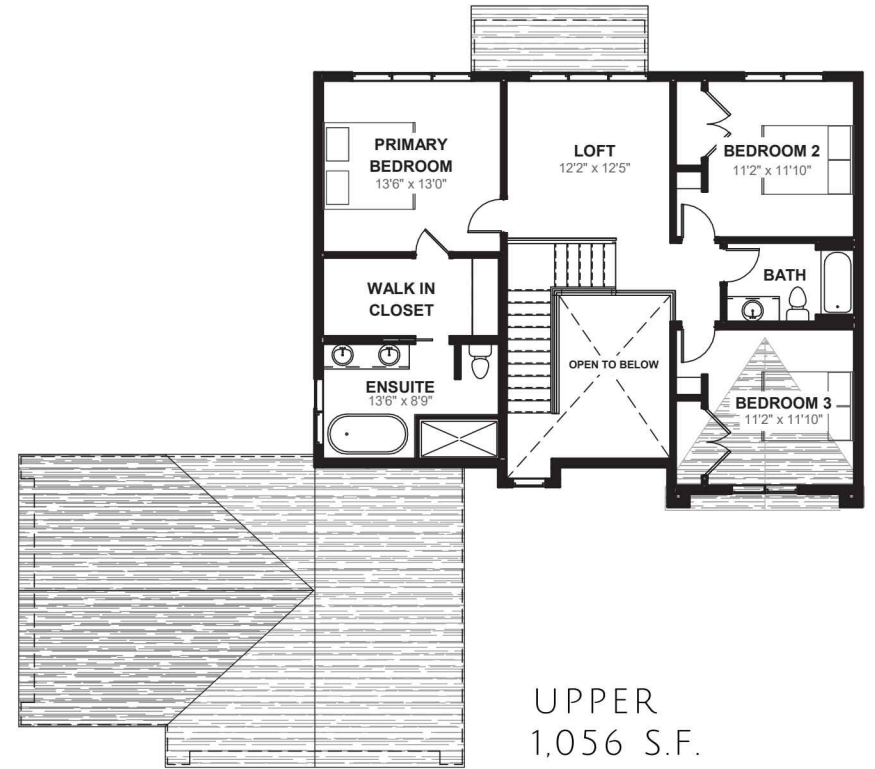
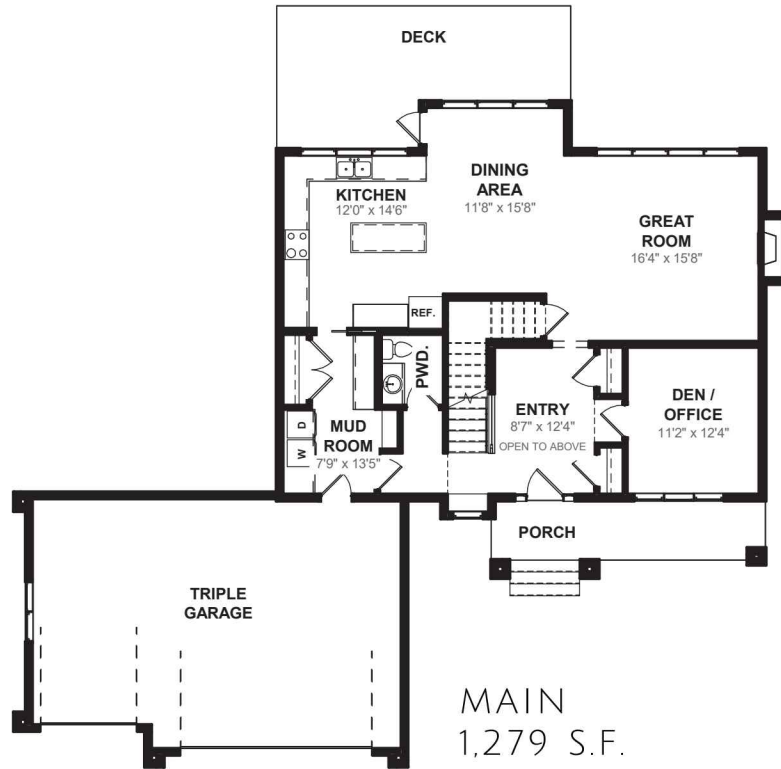
## OUTSTANDING DESIGN FEATURES AND PREMIUM FINISHINGS

- Make a grand entrance with a stunning 2-storey foyer that sets the tone for the entire home.
- Work from home in style with a large study on the main floor that features oversized windows for plenty of natural light.
- The central staircase creates an elegant and seamless flow between the living and dining areas and adds a touch of sophistication to the home.
- Take in the beauty of your backyard with expansive windows that offer a breathtaking view.
- Cook and entertain in style with an extensive kitchen featuring ample counter space and a large island eating bar.
- Embrace indoor/outdoor living with a large deck that's perfect for dining and relaxation.
- Keep your home organized and clutter-free with a spacious mudroom/pantry area that provides easy access from the garage.
- Park your vehicles and store your belongings with ease in your spacious triple attached garage
- Retreat to your primary wing that includes a customizable walk-in closet and a stunning oversized ensuite, designed for relaxation and indulgence.
- Create a space that suits your family's needs with a second level loft area that can be used as a library, additional study, or a cozy place to watch a movie.
- Enjoy added privacy and convenience with the second and third bedrooms separated by private washroom access.

# THE ANASTASIA

# THE ANASTASIA

2,335 S.F. | 3 BEDROOMS | 2 + 1/2 BATHROOMS



MONTERRA PHASE 2  
WELCOMEHOME@ACDH.CA  
PHONE: 403.450.0078  
WWW.ACDH.CA